

# Dispatcher/Operator Telephone Board Data Sheet

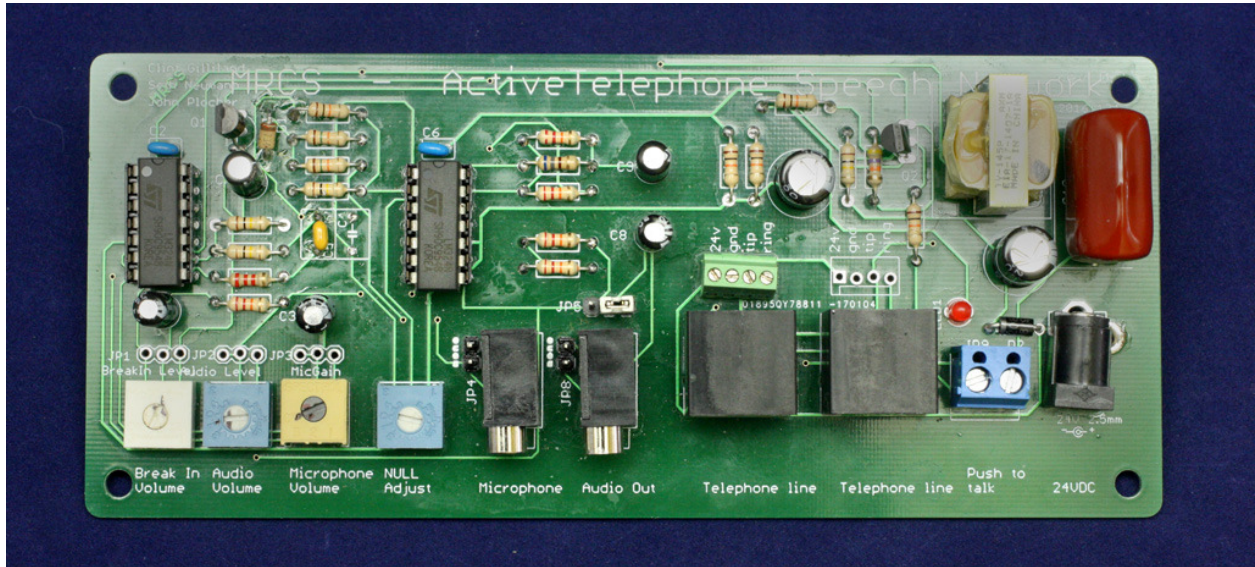


Figure 1 - Dispatcher/Operator Board

The Dispatcher/Operator Telephone board provides all of the electronics and connection points to make a Dispatcher or Operator's station for a Time Table and Train Order Railroad. It provides independent control of receive, transmit and "break-in" volume and since it provides its own power, it will not load the telephone line in large systems. The DS/OP board can help telephone systems suffering from "can't hear" complaints.

## Features

- Independent receive, and transmit volume controls to ensure the DS/OP can hear and be heard
- "break-in" (when a station is trying to talk to the DS/OP while the DS/OP is talking) and output phase adjustments to control feedback when used with a desk mic (you must use a directional or cardioid pattern mic for reliable mic/speaker operation)
- Does not draw power from the Dispatcher's "Train Wire"
- Supports "computer" headsets with separate 1/8" (3.5mm) plugs, or free standing microphone/speaker arrangements, including "candlestick" or "scissor" style telephones modified for dynamic or electret mics
- Jumpers for tip/ring/sleeve or tip/sleeve plugs on audio inputs and outputs
- Supports dynamic and electret microphones with built in electret power supply (for computer headsets)
- Push (stomp)-to-talk voice switching with screw terminals for footswitch
- Optional connections for remote Volume Controls
- 2 RJ11 jacks for connection to Dispatcher's train line as well as screw terminals
- Uses Regulated 24VDC @ 15 mA on 2.5mm barrel jack, screw terminals, or on pair 3 of the RJ11 (can share power with our EBF31A Battery Feed board)
- Hybrid Null adjust function to reduce line noise
- 2.75" x 6.5" (10x16 cm) form factor fits in a piece of 12" DINRail next to an EBF31A for a complete Dispatcher and Battery Feed Solution for a Dispatcher's Train Line!

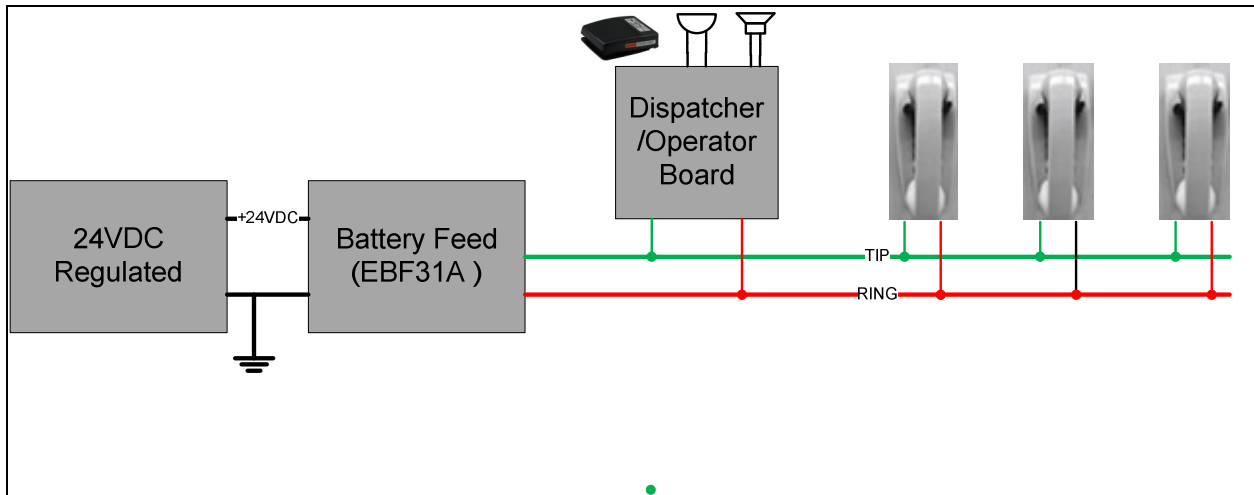


Figure 2 - System Block Diagram



Figure 3 – Dispatcher/Operator and EBF31A boards in DINRail



Figure 4 – Dispatcher/Operator Board with Headset and Mic/Speaker/Foot Pedal