

MP4

Advanced motor switch



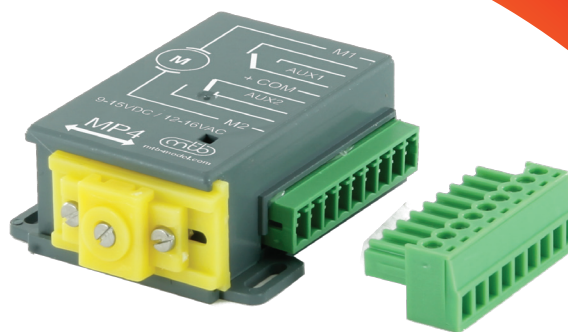
cost effective replacement for MP5

double auxiliary contacts

removable robust connector

mounting size, and stroke interchangeable with MP5

front side identical with MP5, just longer back side by 12mm



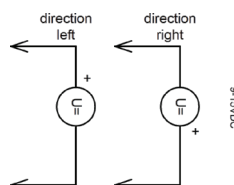
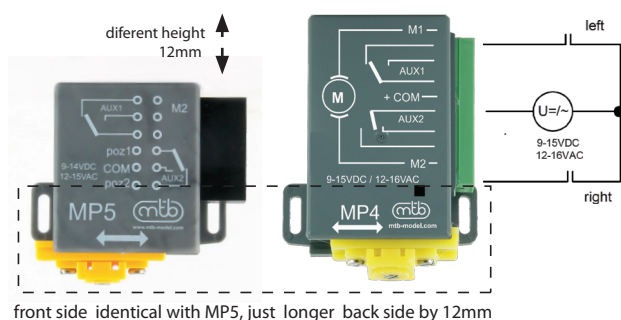
Adjustable throw can be set in three steps 3 mm, 6 mm, 9 mm and 12mm. The cam mechanism provide slow end position stop and lock.

Both DC and AC power supplies are available, with consumption aprox 150 mA during motion. The mechanism has a position end limit switch, i. e. the control voltage can be applied permanently, to be disconnected automatically once a respective position is reached and the motion stops.

Electrical connection is the same as old-style electromagnetic switch can directly replace them without changes in wiring of model layout scheme.

MP4 is equipped with two SPDT contacts (1A) for auxiliary purposes. Easy installation with removable screwless connector

Connection schematics:



Motor switches with integrated DCC decoder for direct control

motor switch with an integrated DCC decoder for direct control

just connect 2 DCC wires

cost-effective solution with a cost of + 2USD more compared to a single MP switch

DP4, DP10- separate input of DCC wires, DP1 receive DCC data from the frog switch input

configuration by using simple test button, and indication LED

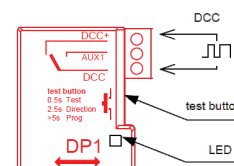
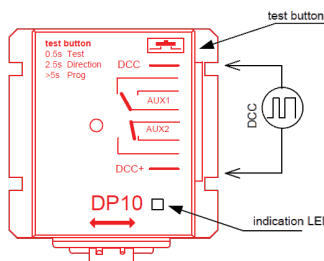
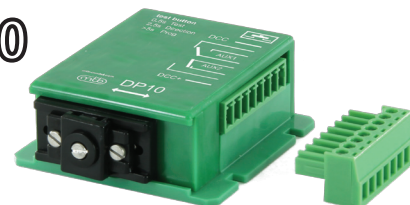
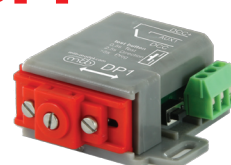
mechanical parameters and size identical to types MP1, MP4 and MP10

test button allows function check, position polarity change and address learning

DP1

DP4

DP10



MTB model
Prague
Made in Czech Republic

www.mtb-model.com