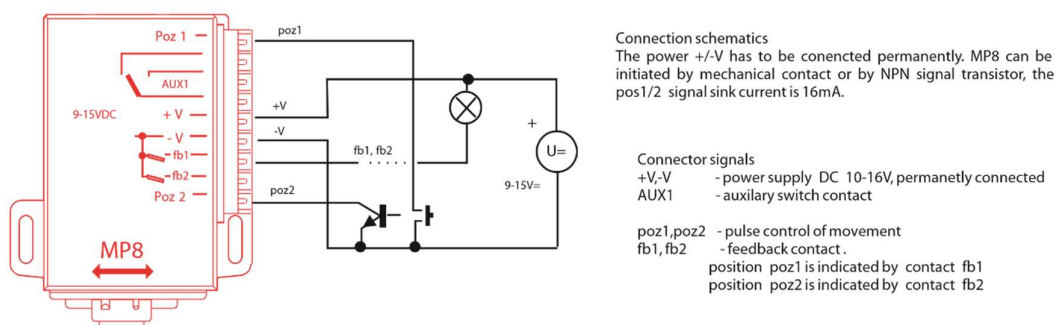
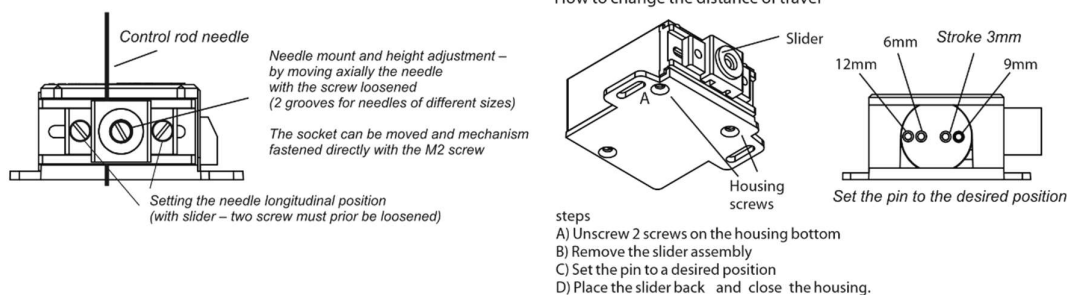


## MP8 Advanced Switch Motor with pulse Control



www.mtb-model.com



The MP8 switch motor is used for operation of two-position mechanisms, such as turnout points or mechanical signals and barriers.

- The stroke travel distance can be set in four increments: 3mm, 6mm, 9mm, and 12mm; See illustration.
- The power required is DC 9-16V (only), current draw is approximately 150mA during operation. The power supply must be permanently connected.
- Control signals pos1, pos2 can be switched pulsed (min pulse length 10ms), the switch completes the movement to the end position, after which the motor is automatically stopped, (about 3 seconds).
- The first 1A contact, AUX1 is intended for auxiliary purposes, (frog power, etc.)
- The second (feedback) contact fb1 and fb2 are intended for position indication – they are connected to V- (usually ground) when the motor is in the respective position.

The warranty is applicable to defects in manufacture only. The product is intended for use at your home only in models, not within commercial or industrial applications. Warranty repairs can be claimed with the manufacturer and/or through a vendor. For contact details visit [www.mtb-model.com](http://www.mtb-model.com). Return the product to an e-waste collection point at the end of its life.

North American Distribution by



Manufacturer: MTB Segala Group, Prague 10, Czech Republic

# Typical MP8 Connections

